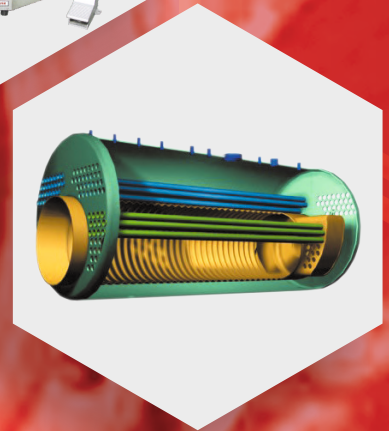
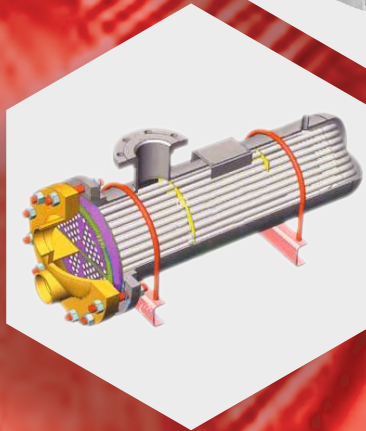




TUBE TOOLS



Tools for every conceivable need....

www.powermasteramerica.com



TUBE CLEANERS





'PORTO' PORTABLE ELECTRIC TUBE CLEANERS



Features :

- Compact and portable for use in multiple locations.
- Easy connect and disconnect of various shafts and cleaning tools.
- Foot Switch enables operator to concentrate on cleaning operation.
- Water moving through shaft flushes out deposits already dislodged by cleaning tools.

The 'PORTO' is built for users to whom a small size and easy transportation means they can clean more tubes faster. Used to clean 1/4" - 1" I.D. tubes in chillers, condensers, evaporators and heat exchangers. The flexible shaft rotates at 1760 rpm as water feeds through the nylon casing to the cleaning tool. As the tool removes the deposits, the water flow flushes them out. A solenoid valve ensures that water flows only when the machine is running. Water consumption can be regulated as needed.

Tube I.D.		Tube Cleaner Model No.	Motor HP	Power KW	Motor Speed RPM	Weight		High	Dimension	
mm	inch					lbs.	Kg.		Wide	Deep
6.4-25.4	1/4-1	PORTO	1/2	0.40	1760	36	16	10"(254mm)	11"(279mm)	18"(457mm)

All units available in your choice of :
 110v 60Hz, 110v 50Hz - 9 Amps. 220v 60Hz, 220v 50Hz - 4.5 Amps.
 Please Specify when ordering.

'TCS-PORTO' PORTABLE ELECTRIC TUBE CLEANINGS SYSTEM

MODEL TCS-PORTO CHILLER TUBE CLEANING SYSTEM

Model TCS-PORTO Chiller tube cleaning system is the most common system for cleaning chillers by users to whom size and portability is paramount.

CONTENTS

- 'PORTO' Portable Tube Cleaner - 1 no.
- PFS - 500 - 140 Flexible Shafts - 2 nos.
- Nylon Brush (specify size) - 25 nos.
- Repair kit for flexible shaft PFS-500 consisting of 4 drive end couplings, 4 tool end couplings, 1 shaft repair tool with hammer, 1 flexible shaft lubricator and 2 bottles of lubricant.



POWERMASTER AMERICA LLC.

26, Russell Park Road, Syosset, New York 11791.

Phone : +1 516.503.5294

Website: www.powermasteramerica.com Email: sales@powermasteramerica.com